

# V-Slim

---

Super-slim profile of just W7.9 mm x H11.9 mm with built-in plug-in connector that allows head-to-head fixture-to-fixture connection.

Suitable for cabinet, niche lighting or other furniture applications.

DC24V

12.0W/m

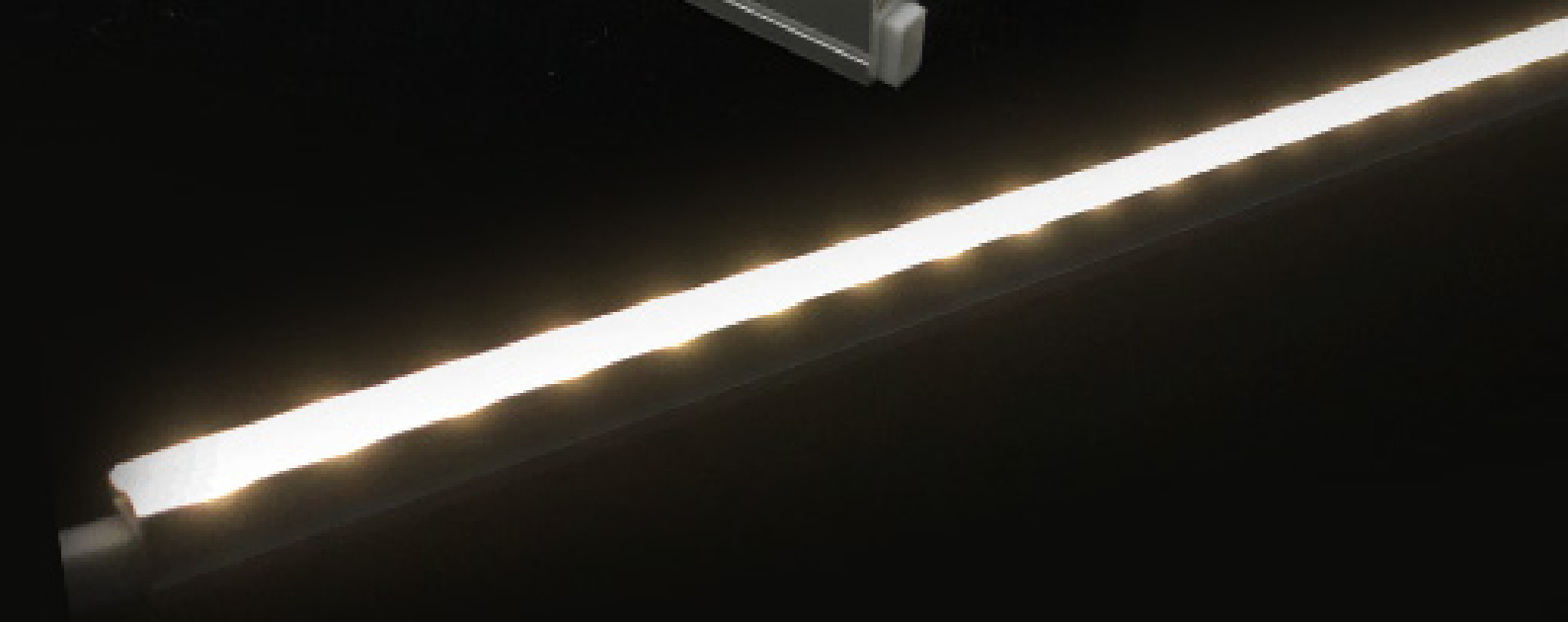
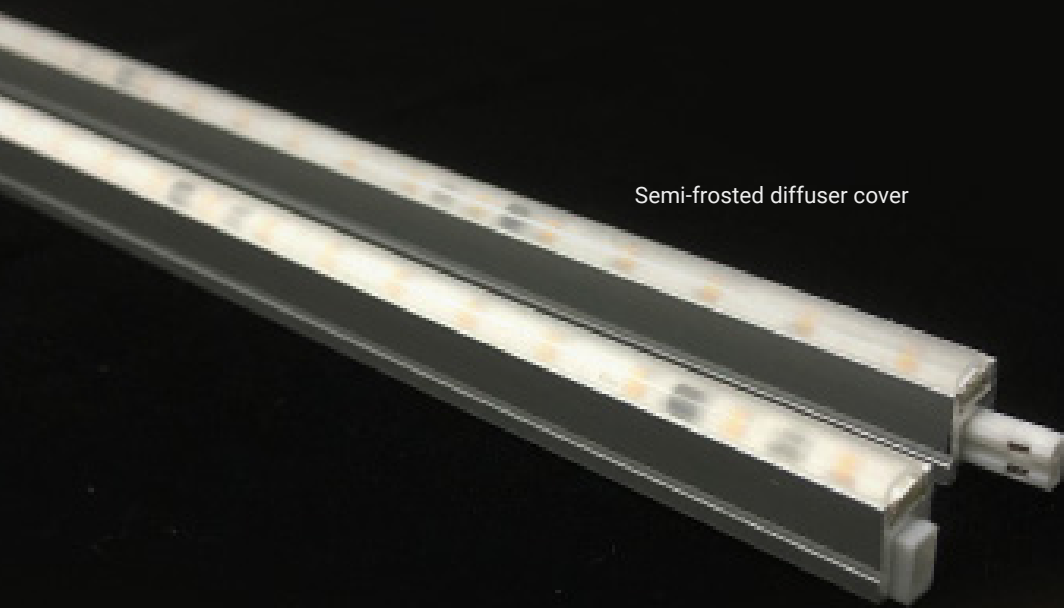
Indoor

Ra85 typ.

Dimmable  
(DMX, DALI,  
0-10V)

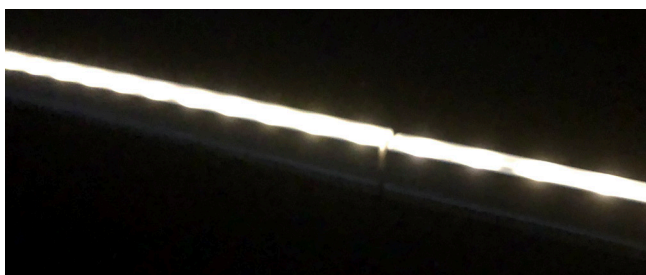
CRI Ra92(typical) build-to-order

Semi-frosted diffuser cover

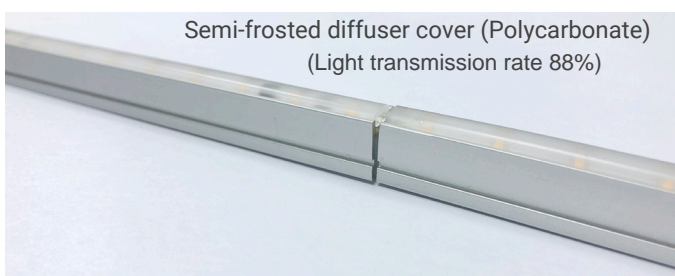
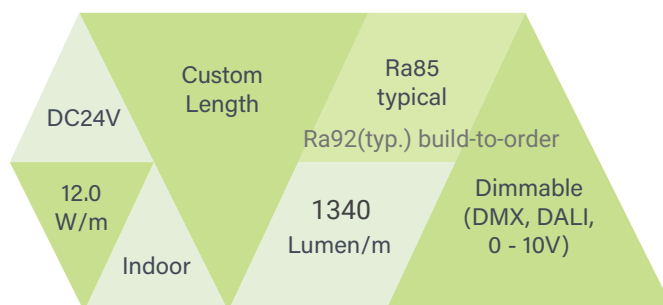


## FEATURES

- Ultra-slim profile W7.9 mm x H11.9mm.
- Built-in connector that allows head-to-head seamless connection.
- Available in CCT 2700K, 3000K and 4000K.
- Reliable/High-efficiency NICHIA LED chip with reverse-polarity protection circuit.
- Minimized voltage drop due to wires running through the whole housing.
- Binning control: MacAdam 3 step (single-binning)



## BASIC SPECIFICATION



## PRODUCT SPECIFICATIONS

Product Name	V-Slim				
Model No.	VS0331-XXXX	VS0661-XXXX	VS0826-XXXX	VS0991-XXXX	VS1156-XXXX
Input Voltage	24Vdc	24Vdc	24Vdc	24Vdc	24Vdc
Power Consumption	4 W	8 W	10 W	12 W	14 W
Dimension (mm)	331*7.9*12(H)	661*7.9*12(H)	826*7.9*12(H)	991*7.9*12(H)	1156*7.9*12(H)
Weight	60 grams	118 grams	144 grams	171 grams	198 grams
Casing Body	Aluminium Heatsink with UV-resistant Polycarbonate Semi-Frosted Diffuser				
LED Beam Angle	110°	110°	110°	110°	110°
Operating Temperature	-10°C~50°C	-10°C~50°C	-10°C~50°C	-10°C~50°C	-10°C~50°C
Max. Length of Series Connection	4 meter	4 meter	4 meter	4 meter	4 meter
Option Parts	Metal Mounting Bracket 0° (Flat) Type				
No of LEDs	28	56	70	84	98
Power Supply Unit (Gear-Driver)	Constant-Voltage Switching Power Supply (TDK Lambda, Sold Separately)				
Lumens (typical @ CCT 3000K)	445	890	1113	1336	1558

+ Semi-frosted diffuser cover (Polycarbonate resin) light transmission rate 88%

+ LM80 test report available upon request

+ MacAdam 3 step (single-binning)

MODEL NO

Model No

VSXXXX – XXXX

Fixture Type & Fixture Length

Color Temperature

Fixture Type & Fixture Length

- VS1156 → V-Slim L1156mm
- VS0991 → V-Slim L991mm
- VS0826 → V-Slim L826mm
- VS0661 → V-Slim L661mm
- VS0331 → V-Slim L331mm

*\* Above stated fixture length does not include connectors.*

Color Temperature

- 40XX → LED Color 4000K (Ra85 typical)
- 35XX → LED Color 3500K, Build-to-order (Ra85 typical)
- 30XX → LED Color 3000K (Ra85 typical)
- 27XX → LED Color 2700K (Ra85 typical)

*\* The last two code "XX" stands for color binning code (by NICHIA Japan's LED binning) as per MacAdam Step 3 basis*

Example

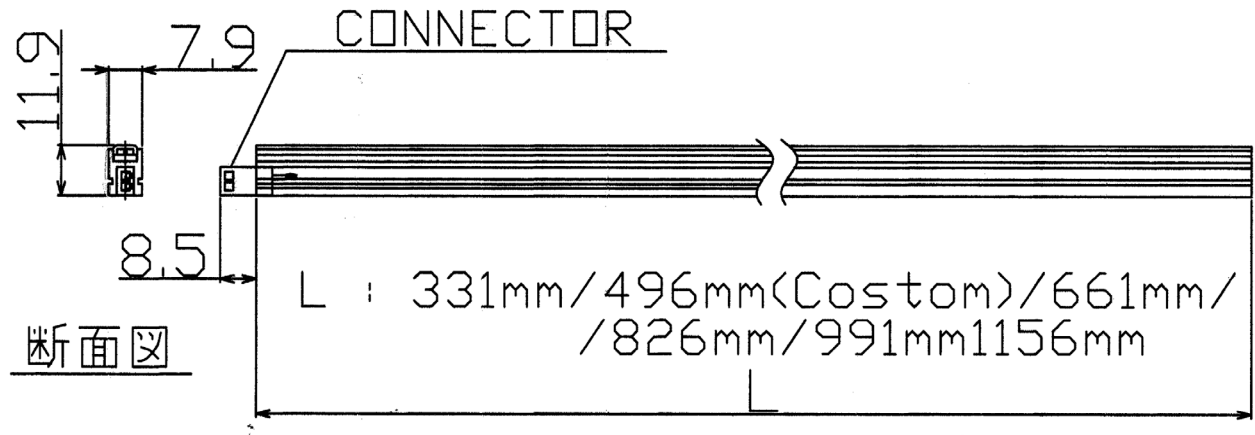
VS0331 – 27XX

Fixture Type & Fixture Length

Color Temperature

⋮  
⋮  
⋮  
V-Slim L331mm

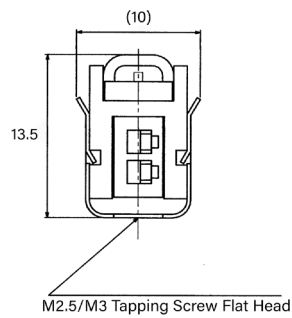
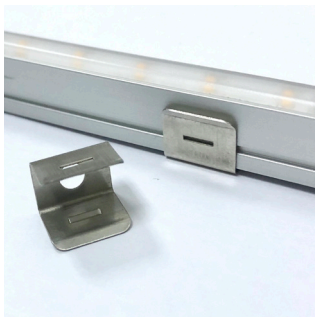
⋮  
⋮  
⋮  
LED Color 2700K  
(Ra85 typical)



## OPTIONAL ACCESSORIES

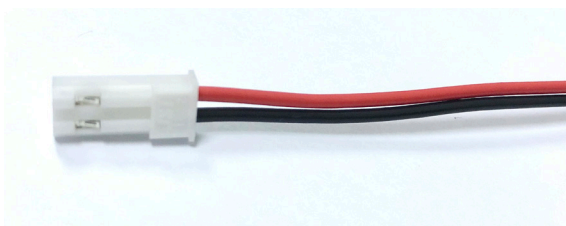
### 1 Mounting Clip Bracket 0° Flat Type

Model: MMC-VS-0DEG



### 2 Male Harness Connector with L500mm Cable

\* Required for first LED Fixture leading to PSU driver



### 3. Magnet (fixture Built-in)

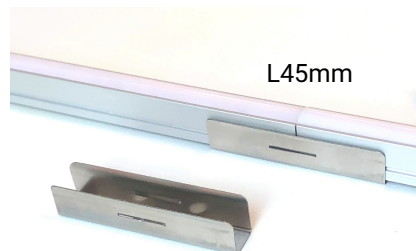


### 4. Metal plate for magnet installation



### 5. Fixture-to-fixture Bracket

Model: MMC-VS-L45



- + Use M2.5/M3 flat head tapping screw (x 2)
- + The same profile as metal mounting clip bracket(0deg)

## PHOTOMETRICS

BROWNIE Lab 190214

